

Monogrip

Different demands
One solution...

Shrink Fit Chuck



a product from **BILZ**

Features :

- Shrinking of Carbide and HSS tools from dia. 3 to 32 mm in tolerance h6 (up to 50 mm)
- Highest quality of roundness / changing repeat accuracy (< 3µm)
- High clamping force
- High quality material used (high temperature resistant special steel)
- Monogrip chuck is fine balanced G2.5 at 25,000 rpm. Further balancing with tool can be done using balancing screws
- Steep taper in tolerance to AT3 class with Form AD/B coolant facility
- Monogrip chucks will have a easy location for self-centering the tool (Fig.1)
- Shrink chuck - dia 3, 4 & 5 : Unique slitting design to ensure smooth shrinking in & out of tools (Fig.2)

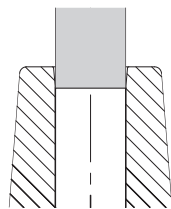


Fig.1

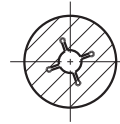
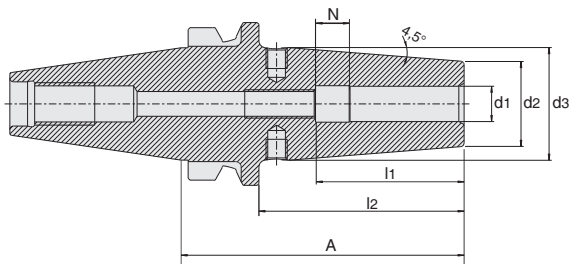


Fig.2

Shrink Fit Chuck BT30, MAS403



d1 (mm)	A (mm)	l2/NL (mm)	d2 (mm)	d3 (mm)	l1 (mm)	N (mm)	G	Designation	Ident No.
3	80	58	10		20			WSKH/03-80/BT30	66651631M
4	80	58	10		20			WSKH/04-80/BT30	66651632M
5	80	58	21		36			WSKH/05-80/BT30	66651633M
6	80	58	21	27	36	8.5	M5	WSKH/06-80/BT30	66651634M
8	80	58	21	27	36	9.5	M6	WSKH/08-80/BT30	66651635M
10	80	58	24	32	42	9.5	M8 x 1	WSKH/10-80/BT30	66651636M
12	80	58	24	32	47	13	M10 x 1	WSKH/12-80/BT30	66651637M
14	80	58	27	34	47	13	M10 x 1	WSKH/14-80/BT30	66651638M
16	80	58	27	34	50	13	M12 x 1	WSKH/16-80/BT30	66651639M
18	90	68	33	42	50	13	M16 x 1	WSKH/18-90/BT30	66651640M
20	90	68	33	42	52	13	M16 x 1	WSKH/20-90/BT30	66651641M

Spare Parts & Accessories

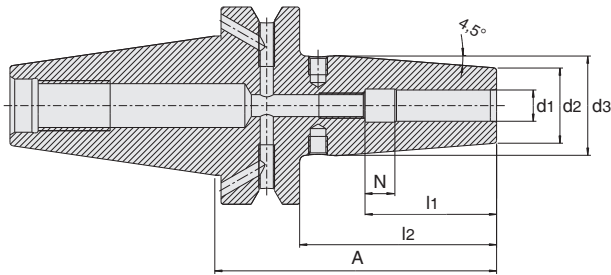


Pull Stud



Adjusting Screw

Shrink Fit Chuck BT40, MAS403



Balanced for G2.5 @ 25,000 rpm

d1 (mm)	A (mm)	l2/NL (mm)	d2 (mm)	d3 (mm)	l1 (mm)	N (mm)	G	Designation	Ident No.
3	90	63	10		20			WSKH/03-90/BT40	66651642M
4	90	63	10		20			WSKH/04-90/BT40	66651643M
5	90	63	21		36			WSKH/05-90/BT40	66651644M
6	90	63	21	27	36	8.5	M5	WSKH/06-90/BT40	66651645M
8	90	63	21	27	36	9.5	M6	WSKH/08-90/BT40	66651646M
10	90	63	24	32	42	9.5	M8 x 1	WSKH/10-90/BT40	66651647M
12	90	63	24	32	47	13	M10 x 1	WSKH/12-90/BT40	66651648M
14	90	63	27	34	47	13	M10 x 1	WSKH/14-90/BT40	66651649M
16	90	63	27	34	50	13	M12 x 1	WSKH/16-90/BT40	66651650M
18	90	63	33	42	50	13	M16 x 1	WSKH/18-90/BT40	66651651M
20	90	63	33	42	52	13	M16 x 1	WSKH/20-90/BT40	66651652M
25	100	73	44	52.5	58	13	M16 x 1	WSKH/25-100/BT40	66651653M
32	100	73	44	53	58	13	M16 x 2	WSKH/32-100/BT40	66651712M
6	130	104	21	27	36	8.5	M5	WSKH/06-130/BT40	66651654M
8	130	104	21	27	36	9.5	M6	WSKH/08-130/BT40	66651655M
10	130	104	24	32	42	9.5	M8 x 1	WSKH/10-130/BT40	66651656M
12	130	104	24	32	47	13	M10 x 1	WSKH/12-130/BT40	66651657M
14	130	104	27	34	47	13	M10 x 1	WSKH/14-130/BT40	66651658M
16	130	104	27	34	50	13	M12 x 1	WSKH/16-130/BT40	66651659M
18	130	104	33	42	50	13	M16 x 1	WSKH/18-130/BT40	66651660M
20	130	104	33	42	52	13	M16 x 1	WSKH/20-130/BT40	66651661M
25	130	104	44	52.5	58	13	M16 x 1	WSKH/25-130/BT40	66651662M
32	130	104	44	53	58	13	M16 x 2	WSKH/32-130/BT40	66651713M
6	160	134	21	27	36	8.5	M5	WSKH/06-160/BT40	66651663M
8	160	134	21	27	36	9.5	M6	WSKH/08-160/BT40	66651664M
10	160	134	24	32	42	9.5	M8 x 1	WSKH/10-160/BT40	66651665M
12	160	134	24	32	47	13	M10 x 1	WSKH/12-160/BT40	66651666M
14	160	134	27	34	47	13	M10 x 1	WSKH/14-160/BT40	66651667M
16	160	134	27	34	50	13	M12 x 1	WSKH/16-160/BT40	66651668M
18	160	134	33	42	50	13	M16 x 1	WSKH/18-160/BT40	66651669M
20	160	134	33	42	52	13	M16 x 1	WSKH/20-160/BT40	66651670M
25	160	134	44	52.5	58	13	M16 x 1	WSKH/25-160/BT40	66651671M
32	160	134	44	53	58	13	M16 x 2	WSKH/32-160/BT40	66651714M

Notes:

Special GPL's on request

HSK & SK holders are available on request with MOQ

Spare Parts & Accessories

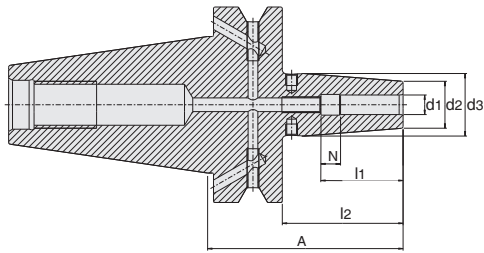


Pull Stud



Adjusting Screw

Shrink Fit Chuck BT50, MAS403



Balanced for G2.5 @ 25,000 rpm

d1 (mm)	A (mm)	l2/NL (mm)	d2 (mm)	d3 (mm)	l1 (mm)	N (mm)	G	Bezeichnung Designation	Ident No.
6	100	62	21	27	36	8.5	M5	WSKH/06-100/BT50	66651672M
8	100	62	21	27	36	9.5	M6	WSKH/08-100/BT50	66651673M
10	100	62	24	32	42	9.5	M8 x 1	WSKH/10-100/BT50	66651674M
12	100	62	24	32	47	13	M10 x 1	WSKH/12-100/BT50	66651675M
14	100	62	27	34	47	13	M10 x 1	WSKH/14-100/BT50	66651676M
16	100	62	27	34	50	13	M12 x 1	WSKH/16-100/BT50	66651677M
18	100	62	33	42	50	13	M16 x 1	WSKH/18-100/BT50	66651678M
20	100	62	33	42	52	13	M16 x 1	WSKH/20-100/BT50	66651679M
25	100	62	44	52.5	58	13	M16 x 1	WSKH/25-100/BT50	66651680M
32	100	62	44	53	58	13	M16 x 1	WSKH/32-100/BT50	66651725M
6	130	82	21	27	36	8.5	M5	WSKH/06-130/BT50	66651681M
8	130	82	21	27	36	9.5	M6	WSKH/08-130/BT50	66651682M
10	130	82	24	32	42	9.5	M8 x 1	WSKH/10-130/BT50	66651683M
12	130	82	24	32	47	13	M10 x 1	WSKH/12-130/BT50	66651684M
14	130	82	27	34	47	13	M10 x 1	WSKH/14-130/BT50	66651685M
16	130	82	27	34	50	13	M12 x 1	WSKH/16-130/BT50	66651686M
18	130	82	33	42	50	13	M16 x 1	WSKH/18-130/BT50	66651687M
20	130	82	33	42	52	13	M16 x 1	WSKH/20-130/BT50	66651688M
25	130	82	44	52.5	58	13	M16 x 1	WSKH/25-130/BT50	66651689M
32	130	82	44	53	58	13	M16 x 1	WSKH/32-130/BT50	66651726M
6	160	122	21	27	36	8.5	M5	WSKH/06-160/BT50	66651690M
8	160	122	21	27	36	9.5	M6	WSKH/08-160/BT50	66651691M
10	160	122	24	32	42	9.5	M8 x 1	WSKH/10-160/BT50	66651692M
12	160	122	24	32	47	13	M10 x 1	WSKH/12-160/BT50	66651693M
14	160	122	27	34	47	13	M10 x 1	WSKH/14-160/BT50	66651694M
16	160	122	27	34	50	13	M12 x 1	WSKH/16-160/BT50	66651695M
18	160	122	33	42	50	13	M16 x 1	WSKH/18-160/BT50	66651696M
20	160	122	33	42	52	13	M16 x 1	WSKH/20-160/BT50	66651697M
25	160	122	44	52.5	58	13	M16 x 1	WSKH/25-160/BT50	66651698M
32	160	122	44	53	58	13	M16 x 1	WSKH/32-160/BT50	66651727M

Notes:

Special GPL's on request

HSK & SK holders are available on request with MOQ

Spare Parts & Accessories



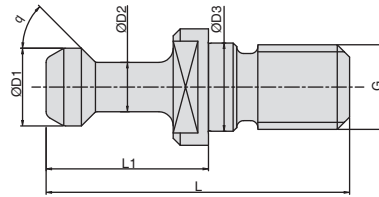
Pull Stud



Adjusting Screw

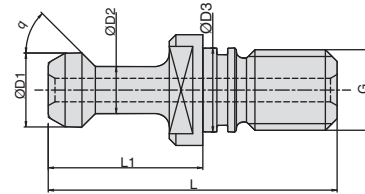
Pull stud MAS BT A+B

Type A (without through hole, without O-ring)



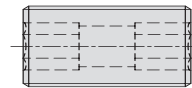
Designation	G	ØD1 (mm)	ØD2 (mm)	ØD3 (mm)	L (mm)	L1 (mm)	q	Ident No.
BN 164 - BT 30	M 12	11.0	7.0	12.5	43.0	23.0	45°	99926583M
BN 164 - BT 40	M 16	15.0	10.0	17.0	60.0	35.0	45°	99926584M
BN 164 - BT 50	M 24	23.0	17.0	25.0	85.0	45.0	45°	99926586M
BN 164 - BT 30-60	M 12	11.0	7.0	12.5	43.0	23.0	60°	99979474M
BN 164 - BT 40-60	M 16	15.0	10.0	17.0	60.0	35.0	60°	99979475M
BN 164 - BT 50-60	M 24	23.0	17.0	25.0	85.0	45.0	60°	99979476M
BN 164 - BT 40-90	M 16	15.0	10.0	17.0	60.0	35.0	90°	99979552M
BN 164 - BT 50-90	M 24	23.0	17.0	25.0	85.0	45.0	90°	66692043M

Type B (with through hole, incl. O-ring)

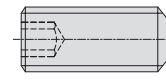


Designation	G	ØD1 (mm)	ØD2 (mm)	ØD3 (mm)	L (mm)	L1 (mm)	q	Ident No.
BN 164B - BT 30	M 12	11.0	7.0	12.5	43.0	23.0	45°	66692066M
BN 164B - BT 40	M 16	15.0	10.0	17.0	60.0	35.0	45°	66692044M
BN 164B - BT 50	M 24	23.0	17.0	25.0	85.0	45.0	45°	66692045M
BN 164B - BT 30-60	M 12	11.0	7.0	12.5	43.0	23.0	60°	66692046M
BN 164B - BT 40-60	M 16	15.0	10.0	17.0	60.0	35.0	60°	66692047M
BN 164B - BT 50-60	M 24	23.0	17.0	25.0	85.0	45.0	60°	66692048M
BN 164B - BT 40-90	M 16	15.0	10.0	17.0	60.0	35.0	90°	66692049M
BN 164B - BT 50-90	M 24	23.0	17.0	25.0	85.0	45.0	90°	66692050M

Adjusting screw & Balancing screw



Adjusting screw



Balancing screw

Shank dia	Adjusting screw for Size		Ident No.	Balancing screw	Ident No.
		L			
Ø3 - Ø5	-	-	-	-	-
Ø6	M5	15	6952890M	M6 x 4	99902014M
Ø8	M6	15	6950028M	M6 x 4	99902014M
Ø10	M8	15	6952442M	M6 x 4	99902014M
Ø12	M10	15	6952444M	M6 x 4	99902014M
Ø14	M10	15	6952444M	M6 x 4	99902014M
Ø16	M12	15	6952445M	M6 x 4	99902014M
Ø18	M12	15	6952445M	M6 x 4	99902014M
Ø20	M16	15	6952529M	M6 x 4	99902014M
Ø25	M16	15	6952529M	M6 x 4	99902014M
Ø32	M16	15	6952529M	M6 x 4	99902014M



* HSK & SK holders are available on request with MOQ.

BILZ

Email : sales@bilztool.com

Contact Partner

